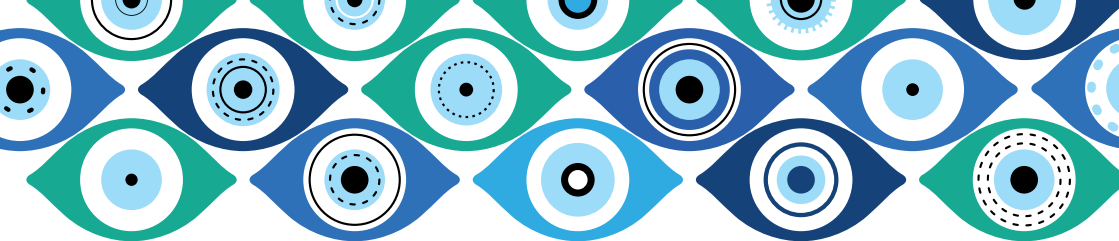


17th EGS Residents' Course

Lisbon

4-5 October 2024





4 OCTOBER 2024

Sophia de Mello

08:40 Welcome and Introduction
08:50 **Luis Abegão Pinto, Ingeborg Stalmans**

09:00 **SESSION 1 - OPEN ANGLE GLAUCOMAS**
12:15 Moderators: **Luis Abegão Pinto, Ingeborg Stalmans**

09:00 Terminology, treatment principles, individualized treatment
Marta Pazos

09:20 Q&A

09:30 Primary open-angle glaucomas
Fotis Topouzis

09:50 Q&A

10:00 Secondary OAG
Sanna Leinonen

10:20 Q&A

10:30 *Coffee break*
10:45

10:45 **SESSION 1A - ANGLE CLOSURE AND CONGENITAL GLAUCOMA**
12:15 Moderators: **Sanna Leinonen, Carlo Traverso**

10:45 Primary and secondary ACG
João Barbosa Breda

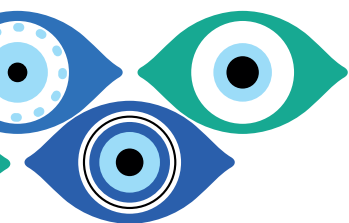
11:05 Q&A

11:15 Congenital / Juvenile glaucoma
Stelios Georgoulas

11:35 Q&A

11:45 Discussion

12:15 *Lunch*
13:15



4 OCTOBER 2024

Sophia de Mello

13:15 **SESSION 2 - MEDICAL AND SURGICAL THERAPY**
16:00 **OF GLAUCOMA**

Moderators: **Alain Bron, Gordana Sunaric Mégevand**

13:15 General principles of glaucoma - treatment & target
Luca Rossetti

13:25 Q&A

13:35 Anti-glaucoma drugs
Gerhard Garhofer

13:55 Q&A

14:05 Lasers in Glaucoma
Karl Mercieca

14:15 Q&A

14:25 Cataract Surgery in Glaucoma
Carlo Traverso

14:35 Q&A

14:45 Trabs and Tubes
Ingeborg Stalmans

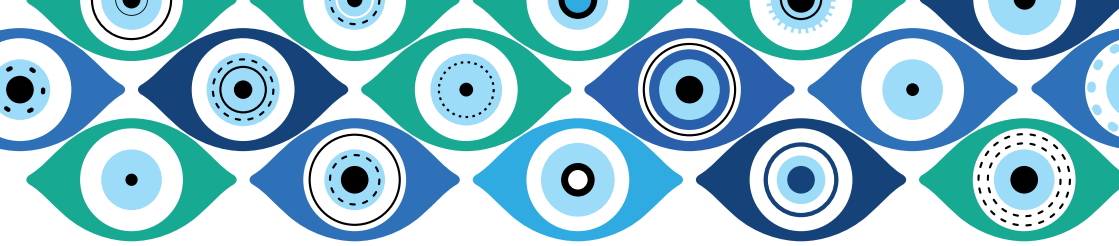
15:05 Q&A

15:15 Newer glaucoma surgeries
Andrew Tatham

15:35 Q&A

15:45 Guides & Guidelines
Luís Abegão Pinto

16:00 *Coffee break*
16:15



4 OCTOBER 2024

Sophia de Mello

16:15 **SESSION 3 - RANDOMIZED TRIALS AND REAL-WORLD CARE**

17:30 Moderators: **Sophie Lemmens, Karl Mercieca**

16:15 Data from randomized controlled trials
Panayiota Founti

16:35 Q&A

16:45 Do's and don'ts of glaucoma management
Gauti Jóhannesson

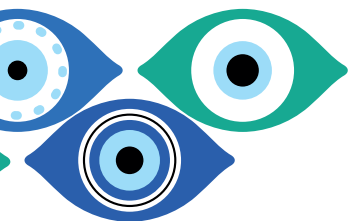
17:05 Q&A

17:15 Discussion

17:30 **EGS EDUCATIONAL CONTINUUM**

17:45 **Alain Bron, Themis Karmiris, Gordana Sunaric Mégevand**

Closing Remarks



5 OCTOBER 2024

09:00
09:20

SESSION 4 - "THE WAKE UP SESSION" QUIZ

Sophia de Mello

Contest and prize delivery
Quiz: **Sanna Leinonen, Karl Mercieca**
Prize: **Carlo Enrico Traverso**

WORKSHOPS

Sophia de Mello

09:30 - 10:30 / 10:30 - 11:30 / 11:50 - 12:50

WORKSHOP 1: OPTIC DISC

Panelists: **Gauti Johannesson, Sanna Leinonen, Karl Mercieca**

09:30 - 10:30 / 10:30 - 11:30 / 11:50 - 12:50

WORKSHOP 2: OCT

Panelists: **Marta Pazos, Andrew Tatham, Rafael Correia Barão**

Amalia Rodrigues

09:30 - 10:30 / 10:30 - 11:30 / 11:50 - 12:50

WORKSHOP 3: PERIMETRY

Panelists: **Ananth Viswanathan, Luis Abegão Pinto, Themis Karmiris**

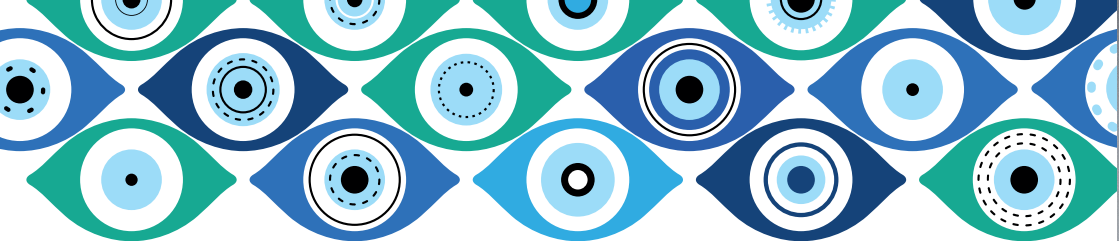
Lopez Graça

11:30
11:50

Coffee break

13:00
14:00

Lunch



Sophia de Mello

14:00 - 15:00/15:00 - 16:00/ 16:20 - 17:20

WORKSHOP 4: ANGLE-CLOSURE MANAGEMENT

Panelists: Tony Hommer, Sophie Lemmens, João Barbosa Breda

Amalia Rodrigues

14:00 - 15:00/15:00 - 16:00/16:20 - 17.20

WORKSHOP 5: CLINICAL MANAGEMENT

Panelists: Gordana Sunaric Mégevand, Alain Bron, Luca Rossetti

Maria Helena

14:00 - 15:00/15:00 - 16:00/ 16:20 - 17.20

WORKSHOP 6: SURGERY DRYLAB

Panelists: Luís Abegão Pinto, Ingeborg Stalmans, Stelios Georgoulas,
Panayiota Founti, Karl Mercieca, Marta Pazos

16:00
16:20

Coffee break



At AbbVie, we set our sights on a future where vision lasts a lifetime.

With a legacy of 75 years in eye care, we're proud to offer 125 eye care products that help to preserve and protect vision for patients around the world. It's not just what we do - it's who we are. We treat conditions from the front to the back of the eye, including glaucoma, ocular surface disease, refractive errors and retinal diseases. We focus on clinically relevant science to make a meaningful difference for patients. We advance innovation and seek to elevate the standard of care.



We Help People See Brilliantly.

At Alcon, we aspire to lead the world in innovating life-changing vision products because when people see brilliantly, they live brilliantly.

Each year our products touch the lives of millions of people living with conditions like cataracts, glaucoma, retinal diseases, and refractive errors. We offer the most complete line of ophthalmic surgical devices, as well as a differentiated portfolio of contact lenses, lens care solutions, and pharmaceutical and over-the-counter eye drops.

Alcon is also at the forefront of innovation, partnering with Eye Care Professionals to bring the gift of sight to more people around the world.

That's been our legacy for more than 75 years—and continues to guide our focus towards the brilliant future ahead.

Learn more at alcon.com

CONNECT WITH US!



@AlconEyeCare
@AlconCareers



@Alcon



@AlconLife



@Alcon



EACH GLAUCOMA
JOURNEY CAN
BE DIFFERENT:
**SUPPORTING
PATIENTS AT
EVERY STAGE**

Santen

Want to discover how we can help you
support your patients at every stage of
their journey?

Come see us at the **Santen booth**



European Glaucoma Society
Innovation, Education, Communication, Implementation

17th EGS Residents' Course

Lisbon

4-5 October 2024

Yesterday,
today,
tomorrow



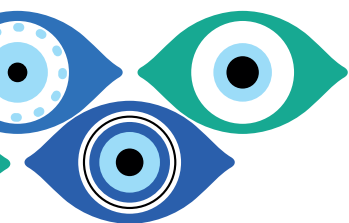
INNOVATION PROXIMITY DEDICATION EDUCATION



At the service
of eye care

www.laboratoires-thea.com





The European Glaucoma Society is grateful to the Educational Partners
for their long-standing commitment

abbvie

Alcon

Santen

 **Théa**
let's open our eyes

